

three steps ahead...





Marble has a rich history, the statues and monuments dating back to HITTITES in ANATOLIA 7000-8000 from today. It has been adorned the entranceways of castles, used as a primary structural material for buildings.



“Look with confidence to the coming days; be responsive, be flexible and provide more value to keep the trust and strong relationships.”

Mustafa ÇEKİÇ

Our legacy of caring will continue; because we all share the commitment of our founder.

Since its founding in 1957 by Mustafa ÇEKİÇ, ÇEKİÇLER COMPANY has grown to become a global corporation and leading manufacturer of industry.

Prestigious Marble From Turkey...



ISO
9001:2008
QUALITY MANAGEMENT SYSTEM
REGISTERED



OHSAS
18001:2007
HEALTH AND SAFETY
MANAGEMENT SYSTEM
REGISTERED

Excellence and reliability

At Çekiçler, with the Prestigious Turkish Marbles which are produced specifically for and used by more than 200 Worldwide Companies; we are your partner in technology, excellence and reliability.

During every project, you can count on our advice and support, because our 120 functional experts are committed to help you reaching your business goals.



ÇEKİÇLER MARBLE CO. is one of the most modern and well-organized export firm in Türkiye. The quarries are operating in different parts of Türkiye; Afyon, Antalya, Bilecik, Burdur, Bursa, Denizli, Diyarbakır, Elazığ and Eskişehir.

The factory is situated in Eskişehir, Organized Industrial District, and occupies a land area of 70.000 sqm. of which 19.000 sqm. are covered. Utilizing state of the art equipment, from the leading Italian Company (Breton) ÇEKİÇLER MARBLE CO. dedicates to the production and exports of HIGH QUALITY TURKISH MARBLE products, with strict quality control and color classification.

Our experienced engineers, technicians and skilled

workers handle all phases of production to meet the demand of its international and domestic customers. Everyone in the company can meet your needs with personalized attention.

ÇEKİÇLER MARBLE offers a wide range of products and owns and operates a number of limestone, marble, travertine and onyx quarries. Our extensive range includes not only marbles from our own quarries, also from other Turkey's distinctive marbles.

For over many years, Çekiçler has built a reputation for excellence. All of us, who are part of ÇEKİÇLER MARBLE look forward to serving you with the same level of excellence and keep your eyes on us.



Creative designs and elegant projects.

Çekiçler's rich and distinctive marble and limestone quarries and factories use a combination of the state-of the art equipment with the latest CAD/CAM and CNC controlled high technological Breton Gang Saws, Slab Polishing Lines, Tiles Polishing Lines, Treatment Lines, Block Cutters, waterjet and shape mill machines to provide products to the most creative designs and projects.



Prestigious Marble From Turkey...

When you need a fast, reliable solution for your prestigious and elegant projects, focus on ÇEKİÇLER that focuses on you.

To produce excellence and unparalleled customer support, backed by the stability of ÇEKİÇLER, with decades of experience in global business is Çekiçler's commitment.

To reach our goal and even go further beyond, ÇEKİÇLER established reliability, excellence, innovation and competence as a fundamental basis for all its actions. Manufacturing uncompromising quality is only the first step in delivering a total quality marble to architects, building owners and builders.



The latest technology and expertise.

To drive ÇEKİÇLER into the future, Çekiçler's Dynamic and experienced team of specialists, combined with the latest technology, promise to be responsive, to be flexible and to provide more value to keep the trust and strong relationships of our valuable customers.



Customer satisfactions and quality standards.

Çekiçler's commitment to uncompromising quality is the foundation for the management of our business and the cornerstone of our business is complete satisfaction of our customers.

The quality assurance system of our marbles starts by checking blocks.

In every step of tile, slab and block production, our experienced staff is conducted in keeping with customer satisfactions and quality standards.



Fully automatic and electronically controlled machines.

With fully automatic and electronically controlled production machines (cutting, polishing, processing) of Breton makes Çekicler the logical partner of your next projects.

Marbles are cut into 30.5x30.5 cm., 60x60 cm., 80x80 cm., 100x100 cm., in tiles, 2 cm., 3 cm. and more in slabs. in order to meet all of our customer's needs.

A wide range of custom sizes are also available upon request. To fulfill the needs of our customers, Çekicler is able to produce stairs, skirtings, sinks, boutique orders and special requests.



Naturally the best.

On the cutting machines and polishing lines, the dimensional accuracy are checked in an interval of time.

Color grading and polishing inspections are made using glosschecker at Çekiçler's quality standards.

Pieces undergo a through quality control during which every single one of them is selected and graded before being packed, so that the goods reach their final destination in good order and condition.



Raw materials, diversity and distinctiveness.

As part of world's leading marble company, Çekiçler Marble Inc., has invested during period 2006-2016 with the aim of increasing the supply and variety of raw materials. 90 % of slabs and tiles of marbles are produced from Çekiçler's own quarries.

The annual production capacity is more than 1.100.000 m² in tiles, slabs and custom sizes and 200.000 tonnes of blocks.





More than 50 countries and hundreds of projects.

All tiles and slabs are packed to meet the full range of international packaging, labelling and shipping standards.

According to customer specification, the finished products are loaded in box or open-top containers and necessary shipping fixation and lashing procedures are employed after loading to withstand ever the most severe shipping conditions.

Çekiçler Marble Inc., is working around globe, providing more than 50 countries and hundreds of projects.

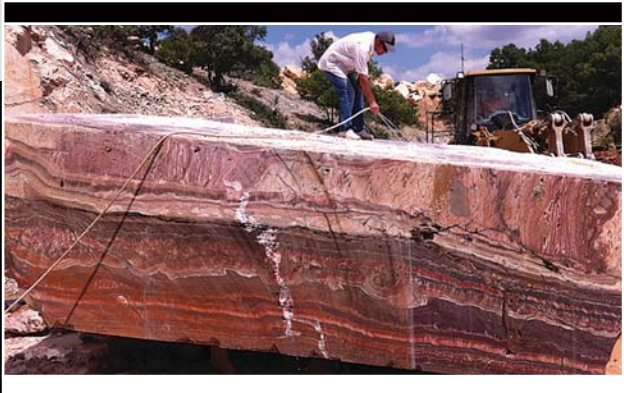


MARBLE QUARRIES





MARBLE & ONYX QUARRIES

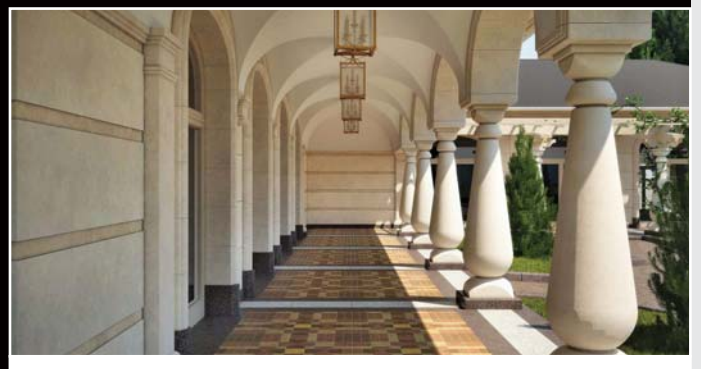
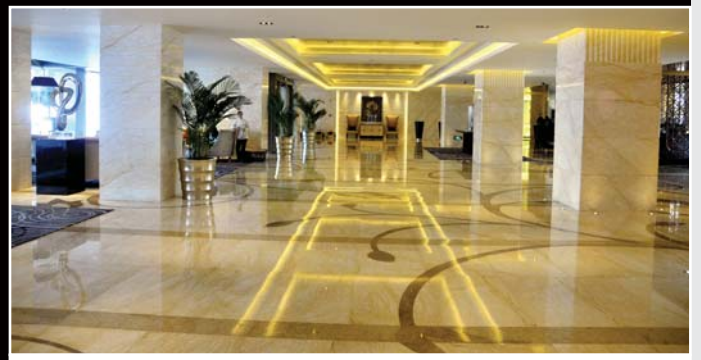
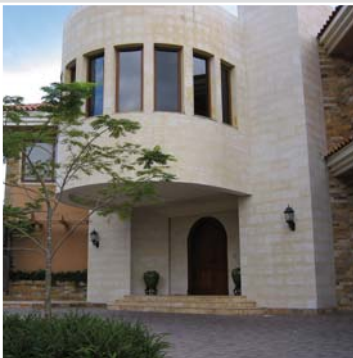




LIMESTONE QUARRIES

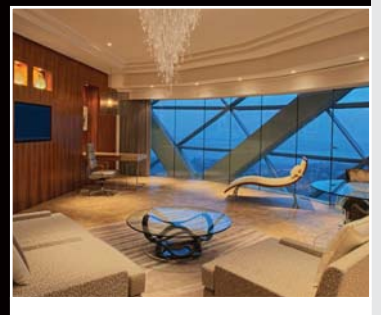
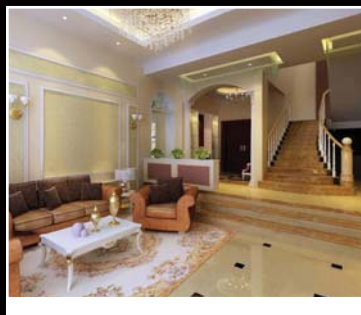
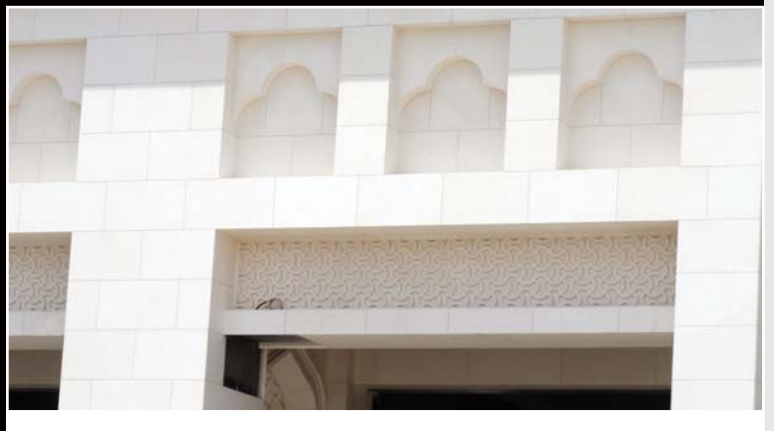
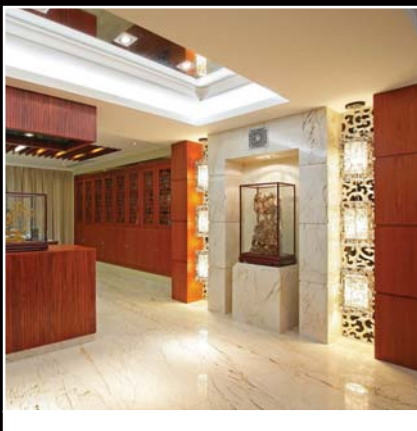
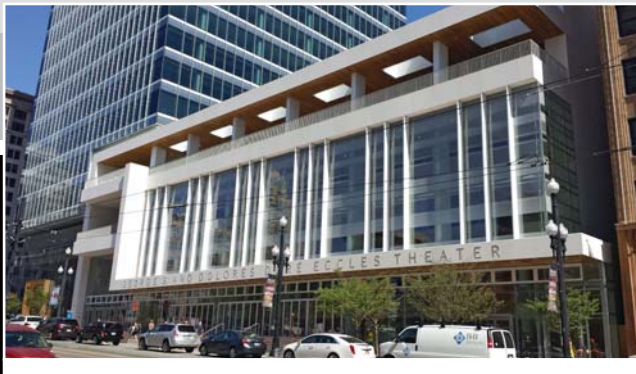
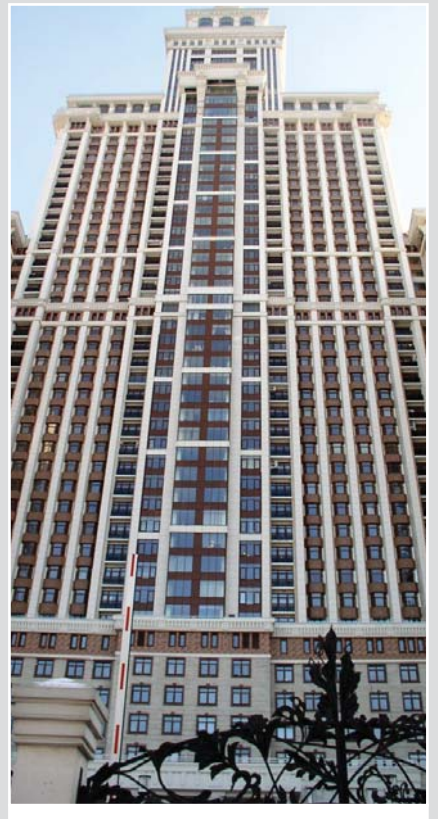


Çekiçler limestone deposits are the hardest, most dense and most beautiful on the face of earth. The veining in it is controllable, and it could get good sizes and thickness. It's consistent in colour and suitable to use for interior and exterior wall cladding, pavers, columns, sills, flooring, stairs, fireplaces, treads, custom furniture and specialty works. The product of limestone is one of that future generations will admire for its beauty, durability and performance. Limestone, Demre-Kale quarries are able to operate year round of temperate climate.

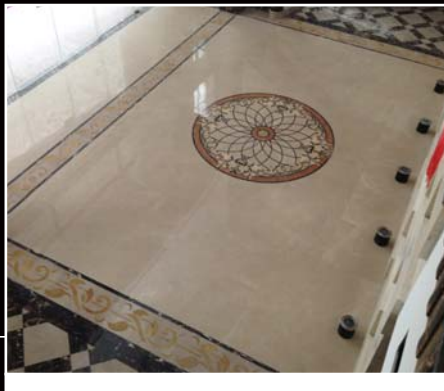
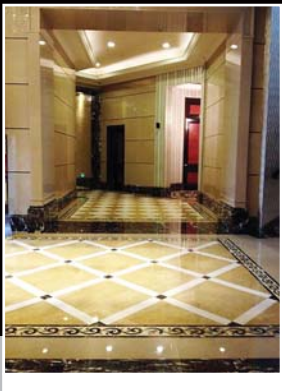


PROJECTS





PROJECTS



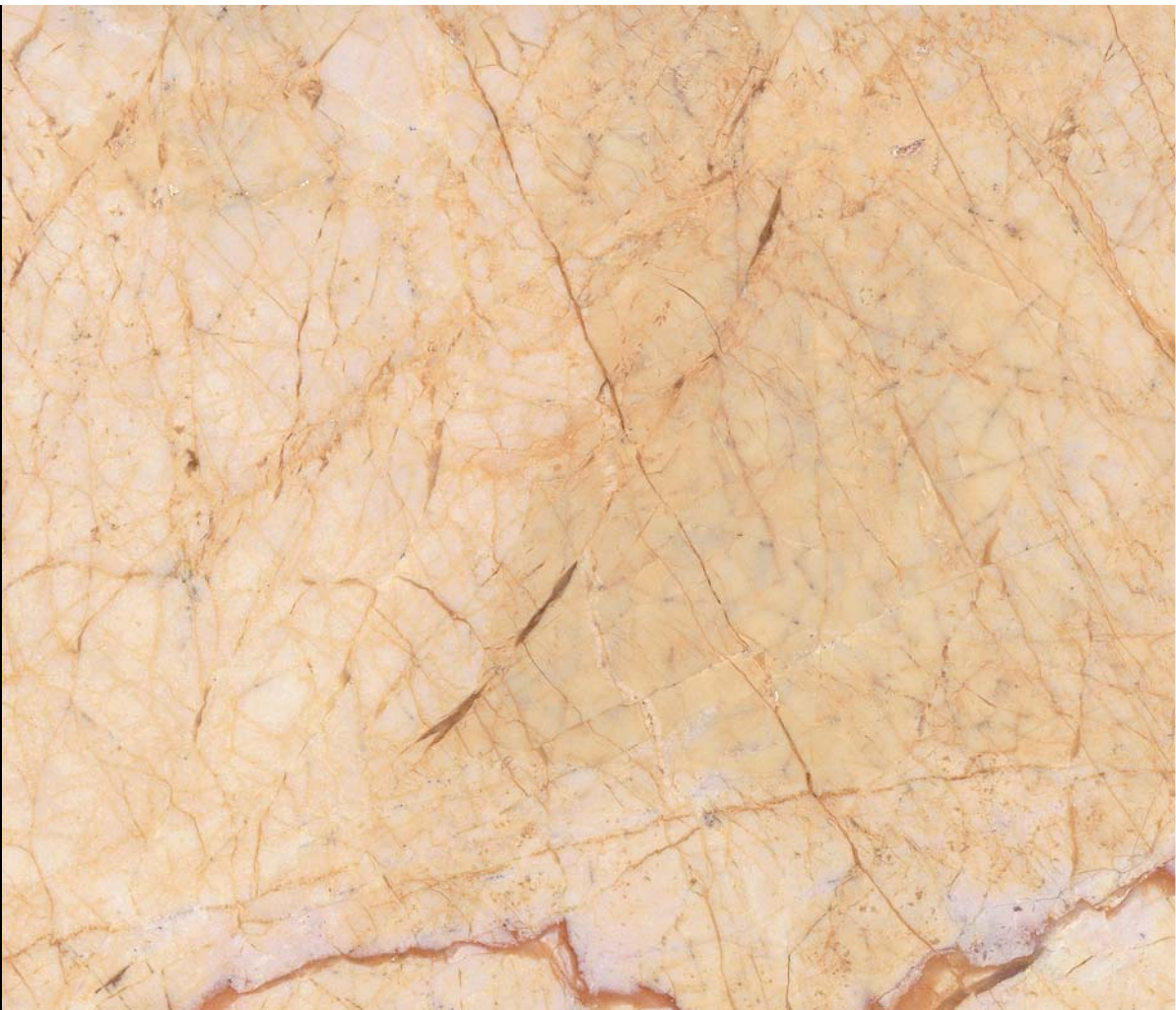


Due to its elegance, beauty, rough and tough nature, marble is the most favourite product for every

project. Marble adds the essential touch of beauty and glamour to every place.

Caribbean Cream

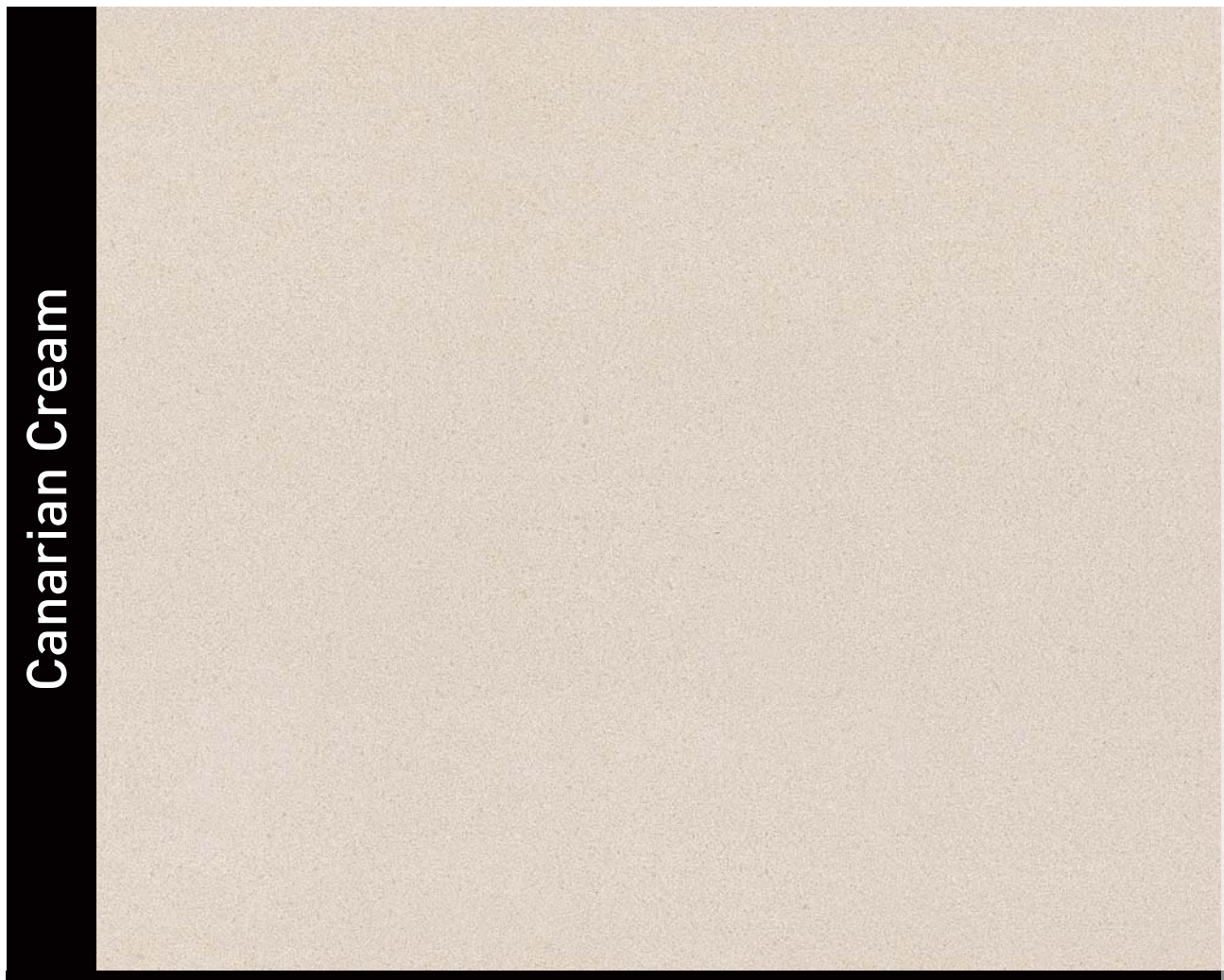
Golden Spider





The timelessness of marble
transmit the distinctiveness
of your designs and nature

reflecting the past and
future characters of
community.





Cekicler Marble: Naturally the best; reflecting nature as an enduring symbol of quality, luxury

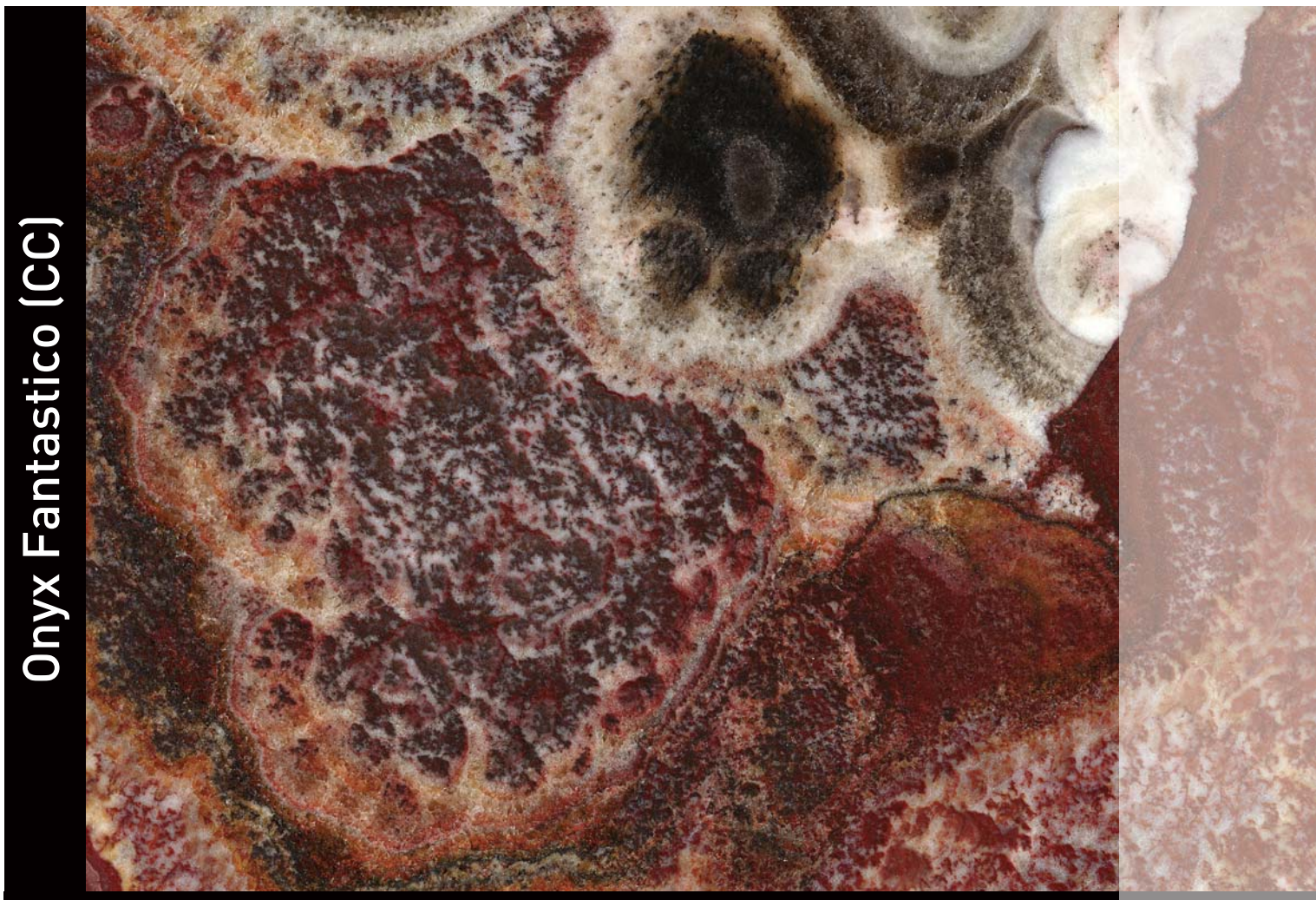
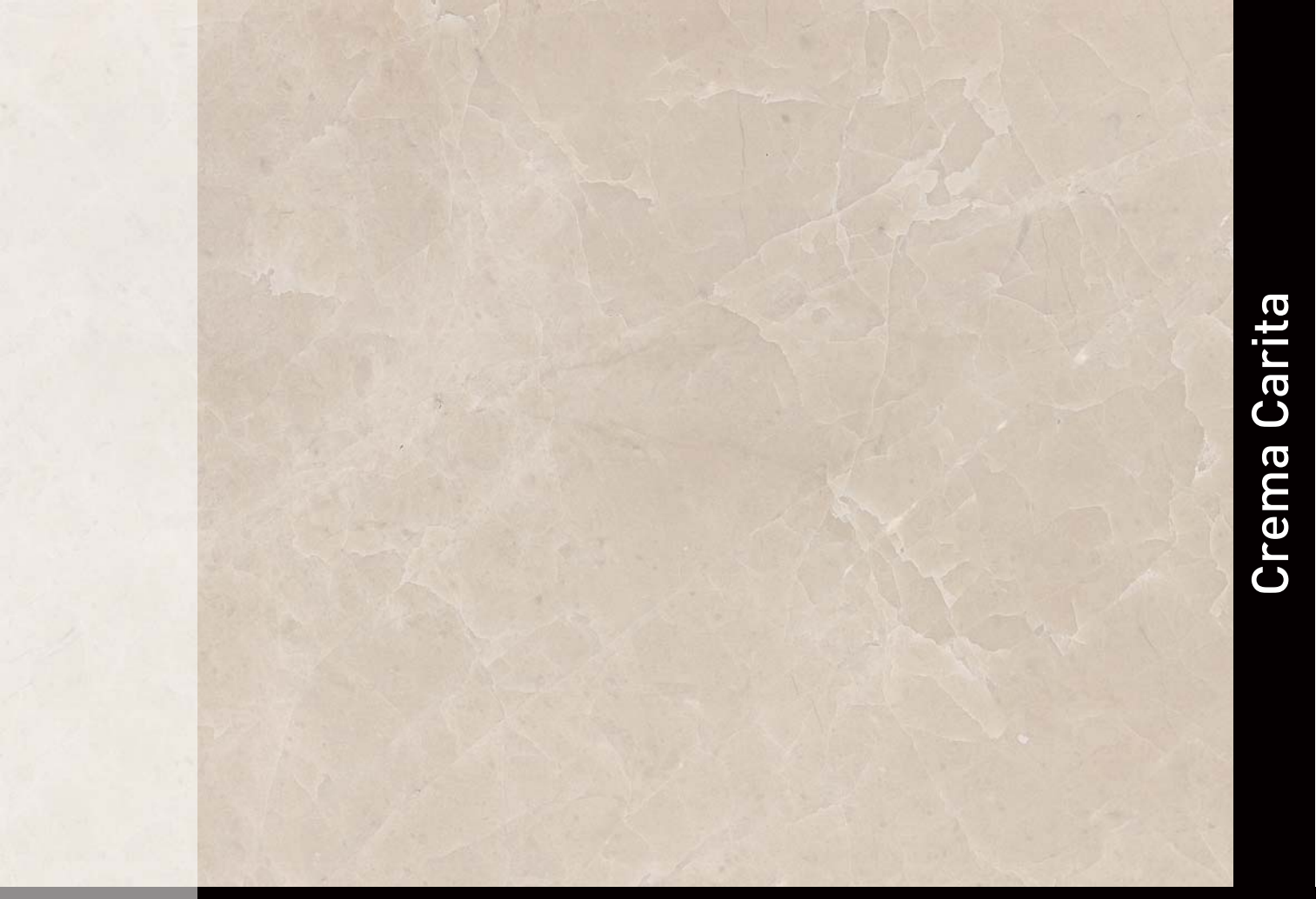
and distinctiveness. And marble is Nature's original green building material.





Marble is the world's original building and memorial material. Any ancient city offer lessons that demonstrate

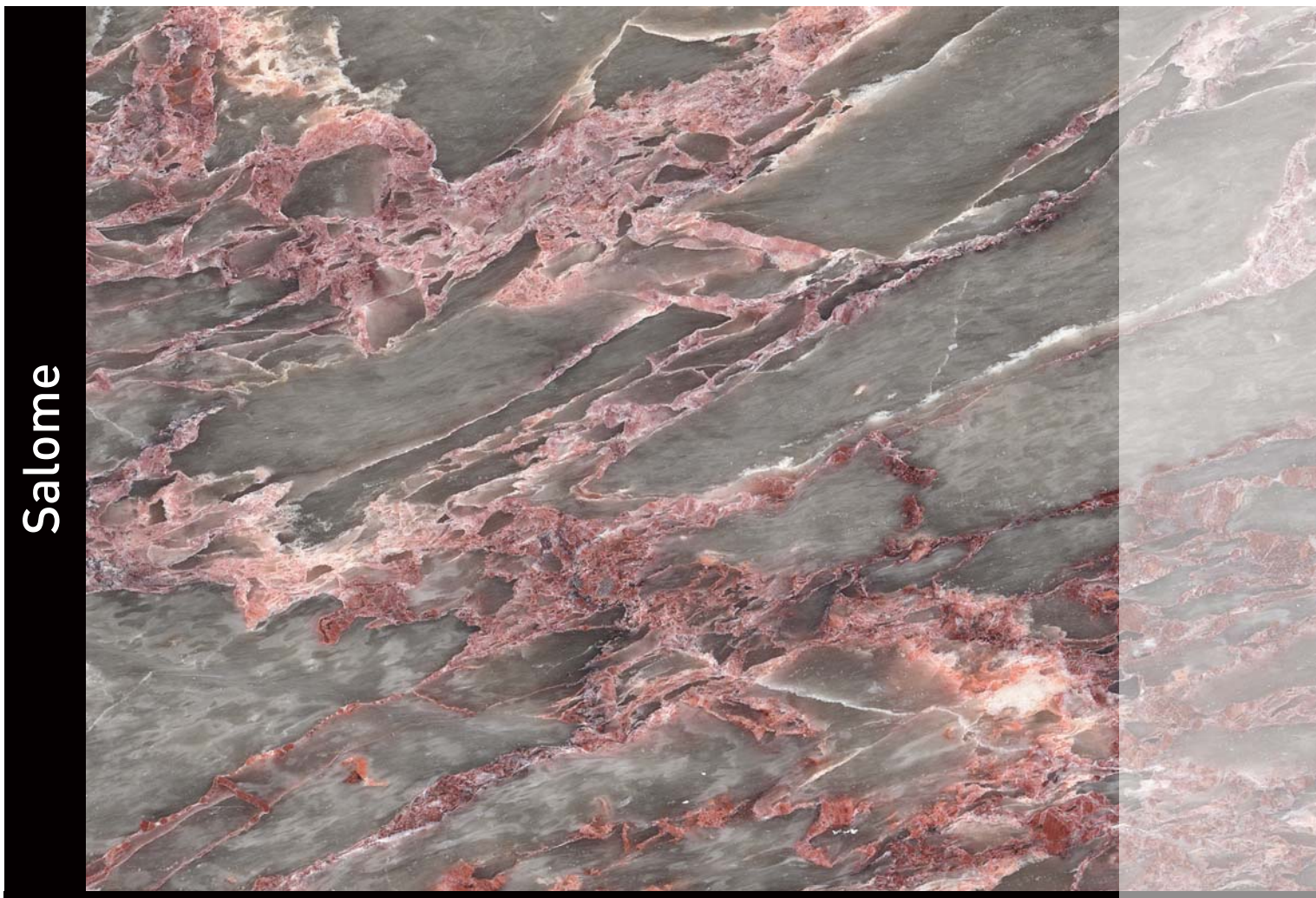
natural stone is the most sustainable building material available, with its natural beauty and enduring quality.





There are many different types of marbles used for various applications, but the requirement of architects, project and building owners are that

everything be done to the highest quality. Everybody requires a building that remain strong in appearance for many years.





Marbles are becoming incredibly popular choice for surfacing, wall covering

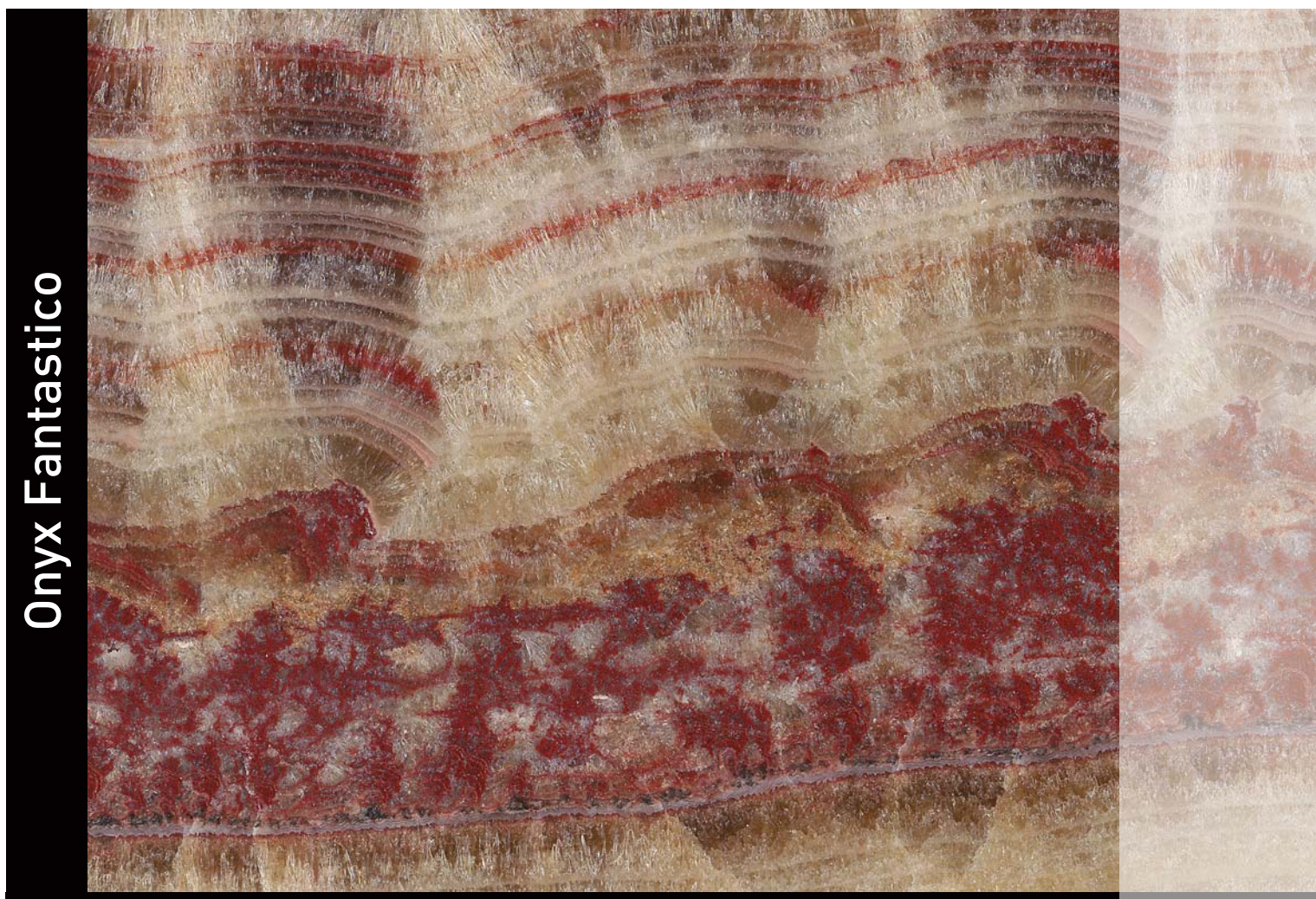
finishes in today's residences, commercial buildings and public areas.





Since Çekiçler is aware of how important it is to supply the right material with the right characteristics in the

right time; Çekiçler Marble Inc., has participated in a large number of projects around the world.





When properly installed and maintained, marble will keep their good looks

for many years of service, even under the most trying heavy traffic conditions.

Bianco Lupo

Rosalia Light

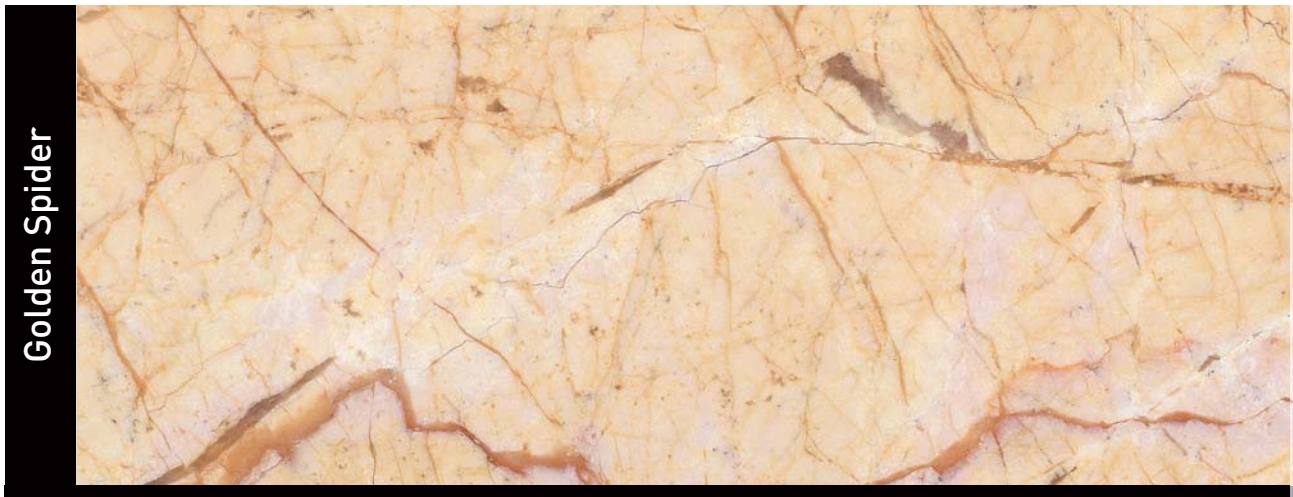
Canarian Cream

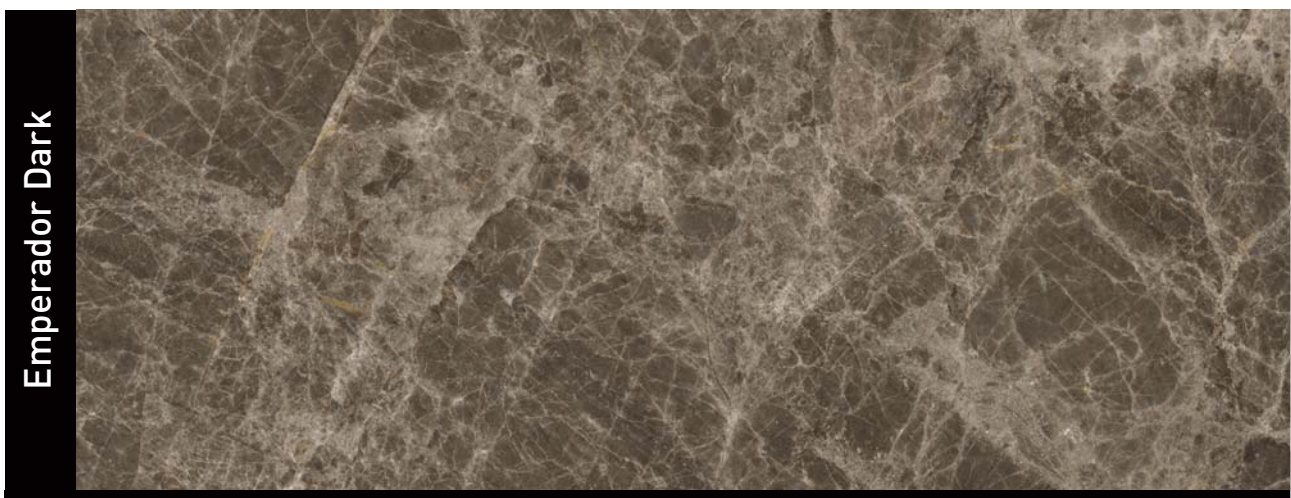
Caribbean Cream

Crema Cybele

Champagne









Bursa Dark Beige



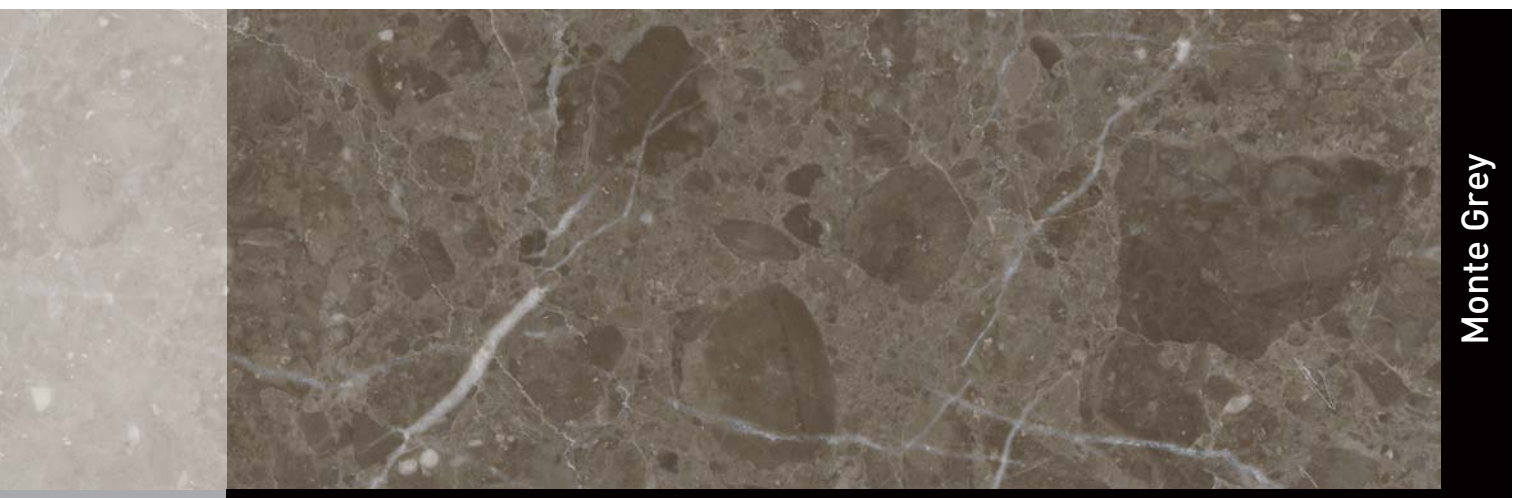
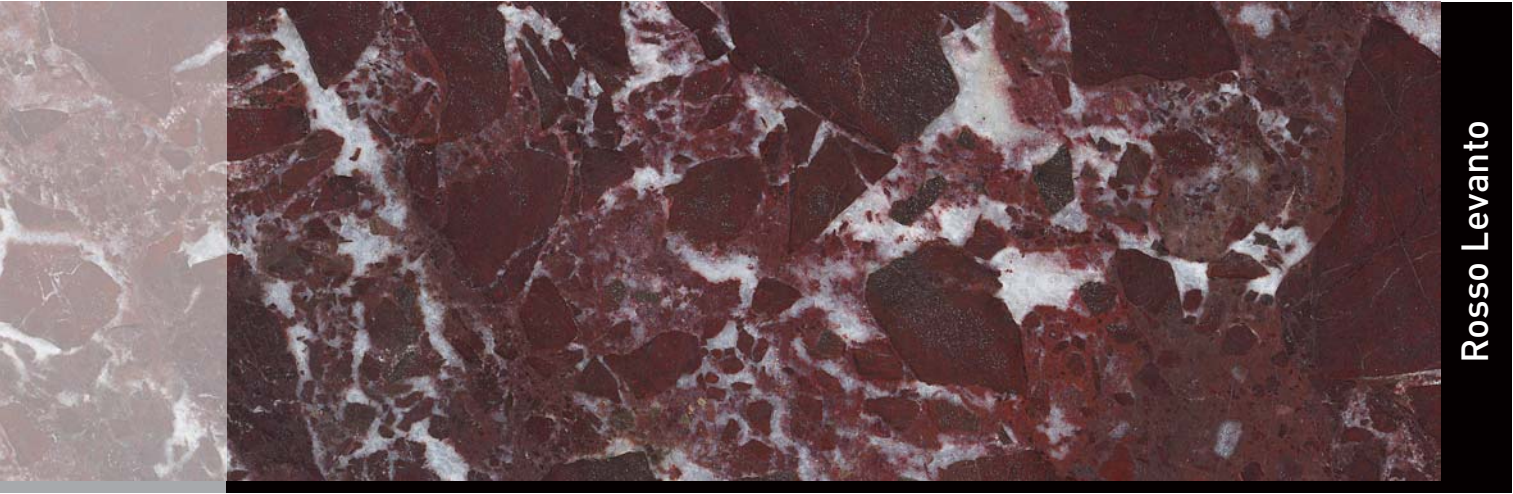
Botticino Cream

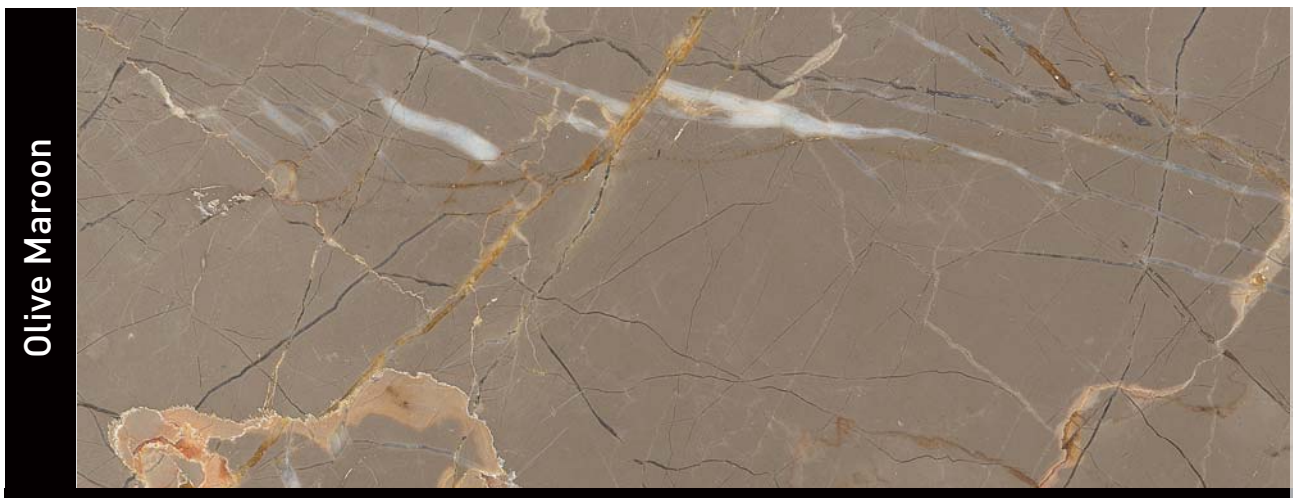
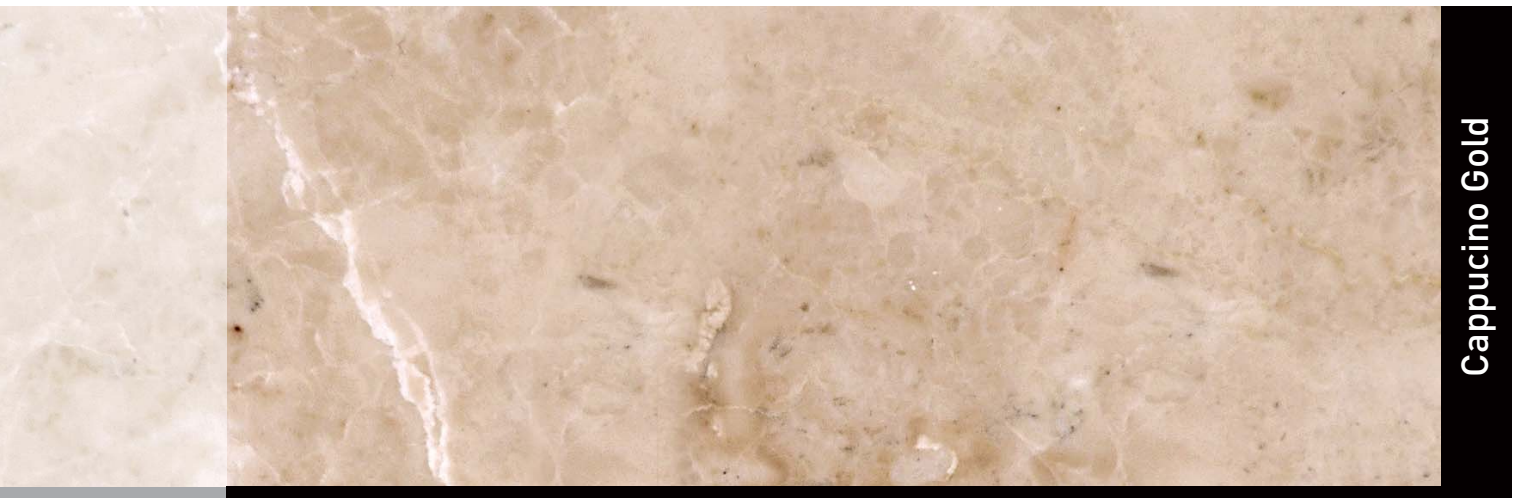


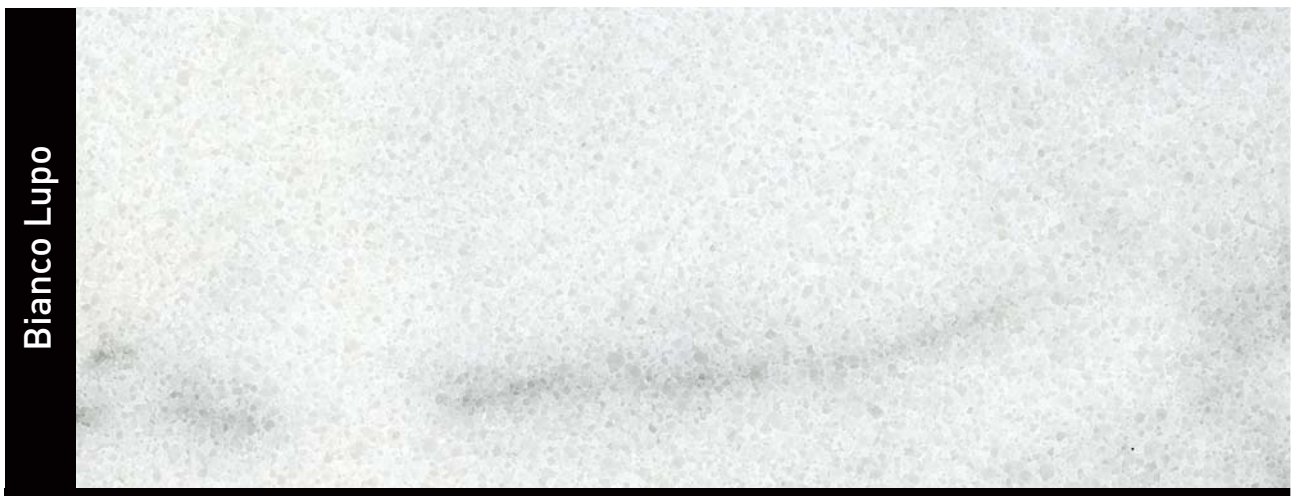
Ottoman Beige



Laguna Green







Afyon White

Afyon Sugar

Silver White

Calacata Gold



White Dolomite



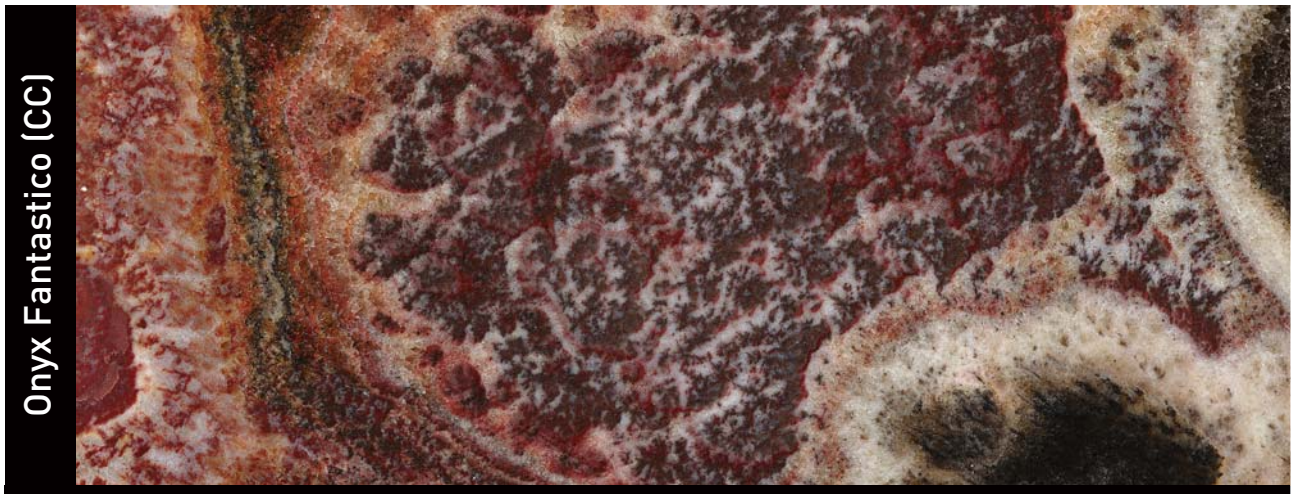
Equator



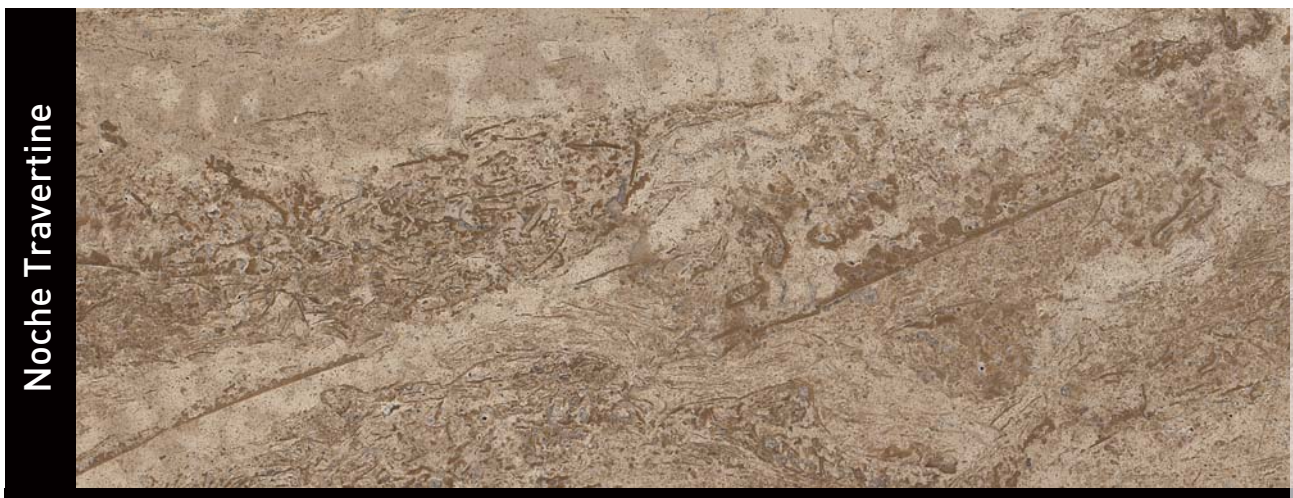
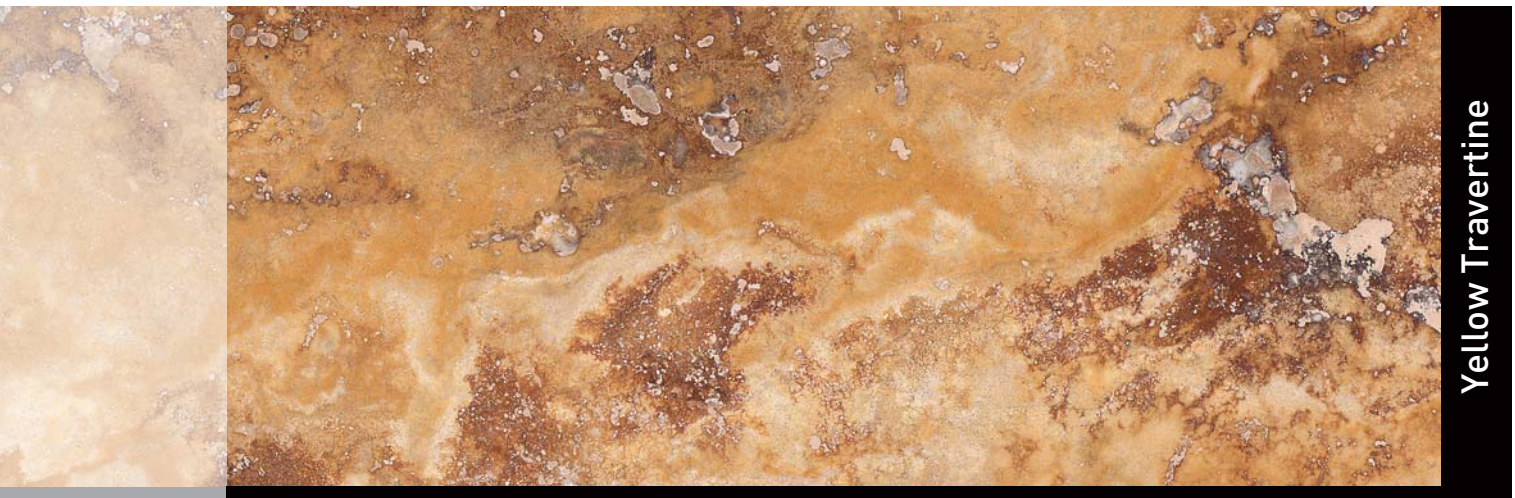
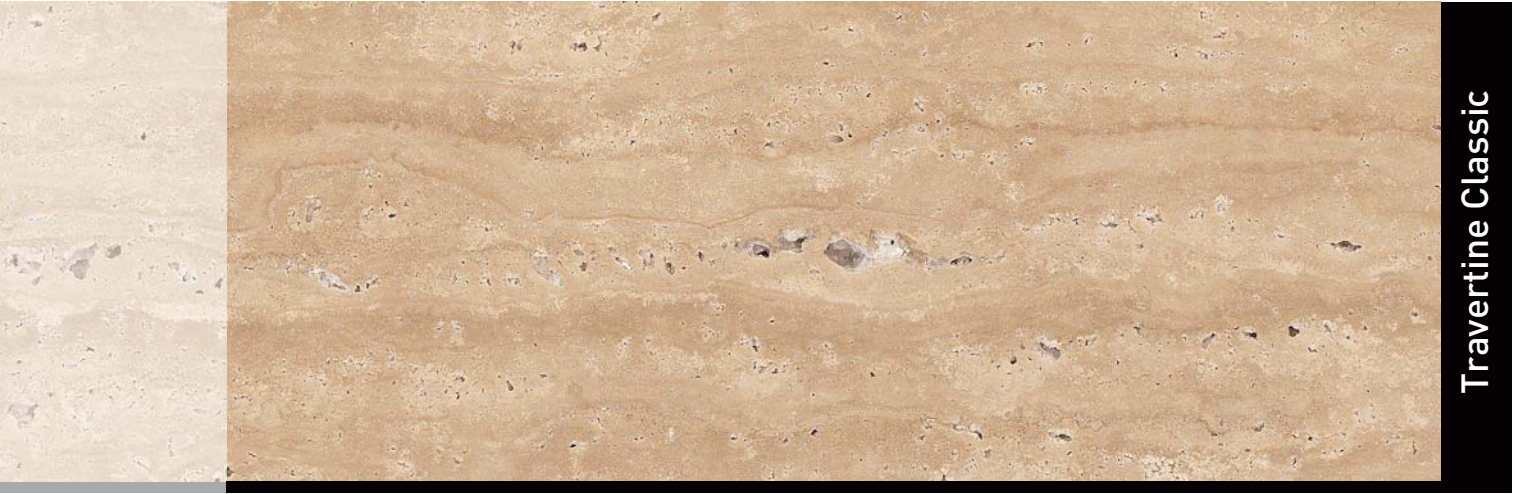
Afyon Violette



Kemalpasa White







MOSAICS

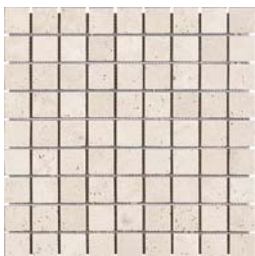


CLASSIC MOSAICS

Available sizes:
5/8"x5/8"x3/8" - 1.5x1.5x1cm, 1"x1"x3/8"-2.3x2.3x1cm,
1.25"x1.25"x3/8"-3.1x3.1x1cm, 2"x2"x3/8"-4.8x4.8x1cm
All colors are available for each model of mosaics.



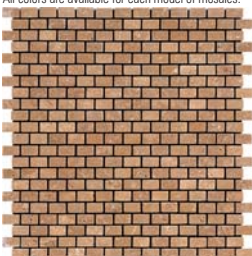
Crema Nova
CM-15-12



Classic Travertine
CM-31-01

BRICK MOSAICS

Available sizes:
1/2"x3/4"x3/8" - 1.2x2x1cm, 5/8"x1.25"x3/8"-1.5x3.2x1cm,
1"x2"x3/8"-2.3x4.8x1cm, 2"x4"x3/8"-4.8x10x1cm
All colors are available for each model of mosaics.



Noche Travertine
CMB-01-05

LARGE PATTERN MOS.

Sizes: 12"x12"x3/8" - 30.5x30.5x1cm
All colors are available for each model of mosaics.



Yellow Travertine
CMP-01-03

SPIRAL MOSAICS

Sizes: 1"x2"x3/8"-1"x1"x3/8" and
5/8"x1.25"x3/8"-5/8"x5/8"x3/8"
All colors are available for each model of mosaics.



Classic-Noche Travertine
CM-SMM-[01-05]

HEXAGON MOSAICS

12" x 12" x 3/8" - 30.5 x 30.5 x 1 cm



Silver White-Toros Black
CM-HX-[13-06]

CROSS BASKET MOSAICS

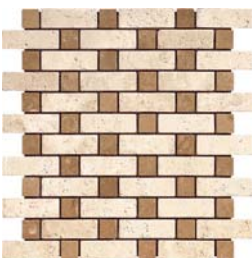
12" x 12" x 3/8" - 30.5 x 30.5 x 1 cm



Sahara Rose-Crema Nova
CM-CB-[15-16]

BRICK BASKET MOSAICS

12" x 12" x 3/8" - 30.5 x 30.5 x 1 cm



Classic-Noche Travertine
CM-BBL-[01-05]

PLAIDS MOSAICS

12" x 12" x 3/8" - 30.5 x 30.5 x 1 cm



Honey Onyx-Crema Nova
CM-PM-[19-16]

HONEYCOMB MOSAICS

12" x 12" x 3/8" - 30.5 x 30.5 x 1 cm
1.25" x 1.25" x 3/8" - 3.1 x 3.1 x 1 cm



Noche Travertine
CM-HC-05

HERRINGBONE MOSAICS

12" x 12" x 3/8" - 30.5 x 30.5 x 1 cm
1.25" x 2.55" x 3/8" - 3.2 x 6.5 x 1 cm



Canarian Cream
CM-HB-26

THREE DIMENSIONAL MOSAICS

12" x 12" x 3/8" - 30.5 x 30.5 x 1 cm



Classic-Yellow Travertine -Toros Black
3D Mosaic - CM-3D-01

CHISELED EDGE MOSAICS

12" x 12" x 3/8" - 30.5 x 30.5 x 1 cm



Crema Nova-Sahara Rose
CM-CHEB-[16-15]

TILT MOSAICS

12" x 12" x 3/8" - 30.5 x 30.5 x 1 cm



Classic Travertine
CM-TL-01

NO JOINT MOSAICS

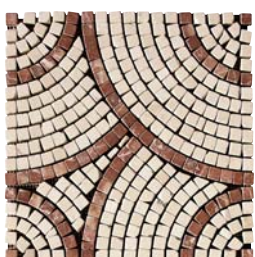
BASCET MOSAICS
11"x11"x3/8" - 28x28x1cm



Sahara Rose-Crema Nova
CM-BS-[15-16]

CIRCLE MOSAICS

12" x 12" x 3/8" - 30.5 x 30.5 x 1 cm



Crema Nova-Sahara Rose
CM-CR-[16-15]

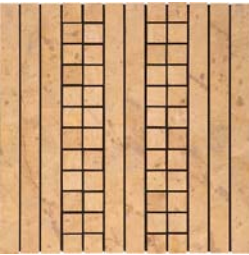


MOSAICS



BAR MOSAICS

12" x 12" x 3/8" - 30.5 x 30.5 x 1 cm



Golden Tabacco
CM-BAR2-23

NEW BAR MOSAICS

12" x 12" x 3/8" - 30.5 x 30.5 x 1 cm
1" x 6" x 3/8" - 2.3 x 15 x 1 cm



Salome
CM-2,3x15-14

LUXURY MOSAICS

12" x 12" x 3/8" - 30.5 x 30.5 x 1 cm



Emperador Light-Emperador Dark
Crema Nova-Gold
CM-TL-[20-25-28-G]

GLASS MOSAICS

12" x 12" x 3/8" - 30.5 x 30.5 x 1 cm



Cre. Nova-Emp. Light and Dark-Sage
Amber-Grey Glass
CM-15-[12-20-25-G1-G2-G8]

PENCIL MOSAICS

12" x 12" x 3/8" - 30.5 x 30.5 x 1 cm



Canarian Cream-Noche Travertine
CM-PR4-[26-05]

CUBIC MOSAICS

11,2" x 11,5" - 28.5 x 29.5 cm
1" x 2" - 2.3 x 4.8 cm



Classic Travertine
CM-BCUB-01

SPLIT FACE MOSAICS

1" x 1" - 2.3 x 2.3 cm



Canarian Cream
CM-SF2-26

ROCK MOSAICS

11,5" x 11,8" - 29.5 x 30cm
2" x 4" - 4.8 x 10 cm



Canarian Cream
CM-RK10-26



CM-S-01
24" x 24" - 61 x 61cm



CM-S-05
36" x 36" - 91 x 91cm

MEDDALLIONS



CM-S-06
24" x 24" - 61 x 61cm



CM-S-09
36" x 36" - 91 x 91cm



CM-S-12
24" x 24" - 61 x 61cm



CM-S-14
36" x 36" - 91 x 91cm



CM-S-15
18" x 18" - 45.7 x 45.7 cm



CM-MED-02
Ø 36" - Ø 91cm



CM-S-16
64" x 72" - 163 x 183 cm



CM-MED-04
Ø 24" - Ø 61cm



CM-MED-06
Ø 36" - Ø 91cm



CM-MED-09
Ø 36" - Ø 91cm

BORDERS



CM-BOR-A10



5x30x1cm - 2"x12"x3/8"

CM-BOR-C41



5x30x1cm - 2"x12"x3/8"

CM-BOR-C37



8x34x1cm - 3"x13,3"x3/8"

CM-BOR-C45



6x28,5x1cm - 2,3"x11,2"x3/8"

CM-BOR-PR07



8x31,5x1,5cm - 3,3"x12,5"x5/8"

CM-BOR-A11



8x30x1cm - 2,3"x12"x3/8"

CM-BOR-G05



7x28,5x1cm - 2,8"x11,2"x3/8"

CM-BOR-C02



6,5x30,5x1cm - 2,5"x12"x3/8"

CM-BOR-C26



10,5x28,5x1cm - 4"x11,2"x3/8"

CM-BOR-C44



8,5x24,5x1cm - 3,3"x9,5"x3/8"

CM-BOR-C32



8x30x1cm - 3"x12"x3/8"

CM-BOR-PR10



8,5x30,5x1,5cm - 3,3"x12x5/8"

CM-BOR-C19



11x25,5x1cm - 4,3"x10"x3/8"

CM-BOR-G07



11x30,5x1,5cm - 4,3"x12"x5/8"

CM-BOR-C24



11,5x25x1cm - 4,5"x10"x3/8"

CM-BOR-P11



12,5x30,5x1cm - 5"x12"x3/8"



BOWLS & SINKS



Classic Travertine
CM-LRB-02
15x42cm



Yellow Travertine
CM-LRB-08
15x42cm



Honey Onyx
CM-LRB-26
15x42cm



Classic Travertine
CM-LRB-33
15x35cm



Classic Travertine
CM-LRB-19
18x43cm



Classic Travertine
CM-LRB-30
15x40cm



Classic Travertine
CM-LCB-02 45X12X49cm



Crema Nova
CM-LCB-16 40X11X50cm



Canarian Cream
CM-LCB-21 50X12X100cm



Red Travertine
CM-LCB-08 46X18X90cm



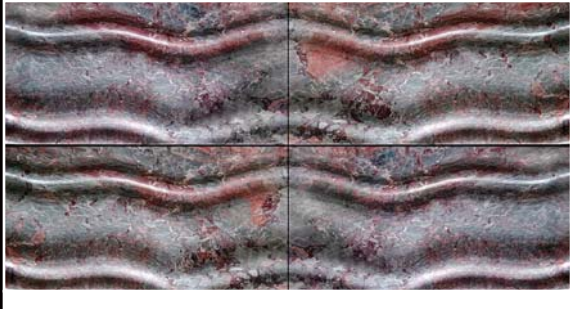
MOULDINGS



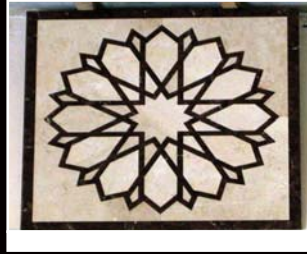
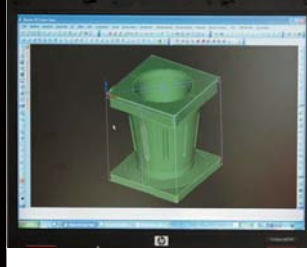
<p>CMA-01 "075-24"</p> <p>Classic Travertine CMA-01-01</p> <p>Noche Travertine CMA-01-05</p>	<p>CMA-02 "042-19"</p> <p>Classic Travertine CMA-02-01</p> <p>Noche Travertine CMA-02-05</p>
<p>CMC-01 "045-28"</p> <p>Classic Travertine CMC-01-01</p> <p>Noche Travertine CMC-01-05</p>	<p>CMD-01 "048-25"</p> <p>Noche Travertine CMD-01-05</p> <p>Crema Dorlion CMD-01-22</p>
<p>CMD-06 "045-26"</p> <p>Classic Travertine CMD-06-01</p> <p>Noche Travertine CMD-06-05</p>	<p>CMD-W "065-28"</p> <p>Classic Travertine CMD-W-01</p> <p>Crema Nova CMD-W-16</p>
<p>CMB-03 "020-23"</p> <p>Classic Travertine CMB-03-01</p> <p>Crema Nova CMB-03-16</p>	<p>CMP-01 "015-19"</p> <p>Classic Travertine CMP-01-01</p> <p>Crema Nova CMP-01-16</p>
<p>CMD-06 "045-26"</p> <p>Classic Travertine CMD-06-01</p> <p>Noche Travertine CMD-06-05</p>	<p>CMCR-01 "030-12"</p> <p>Yellow Travertine CMCR-01-03</p> <p>Noche Travertine CMCR-01-05</p>



EXCLUSIVE COLLECTION



SPECIAL DESIGNS



WORKSHOP





ÇEKİÇLER™
MARBLE INC.

Organize Sanayi Bölgesi 7.Cadde No:15
26110 / Eskişehir / TÜRKİYE
☎ .90.222.236 07 33 (Pbx)
📠 .90.222.236 07 35
🌐 www.cekicler.com.tr
@ cekicler@cekicler.com.tr
info@cekicler.com.tr

